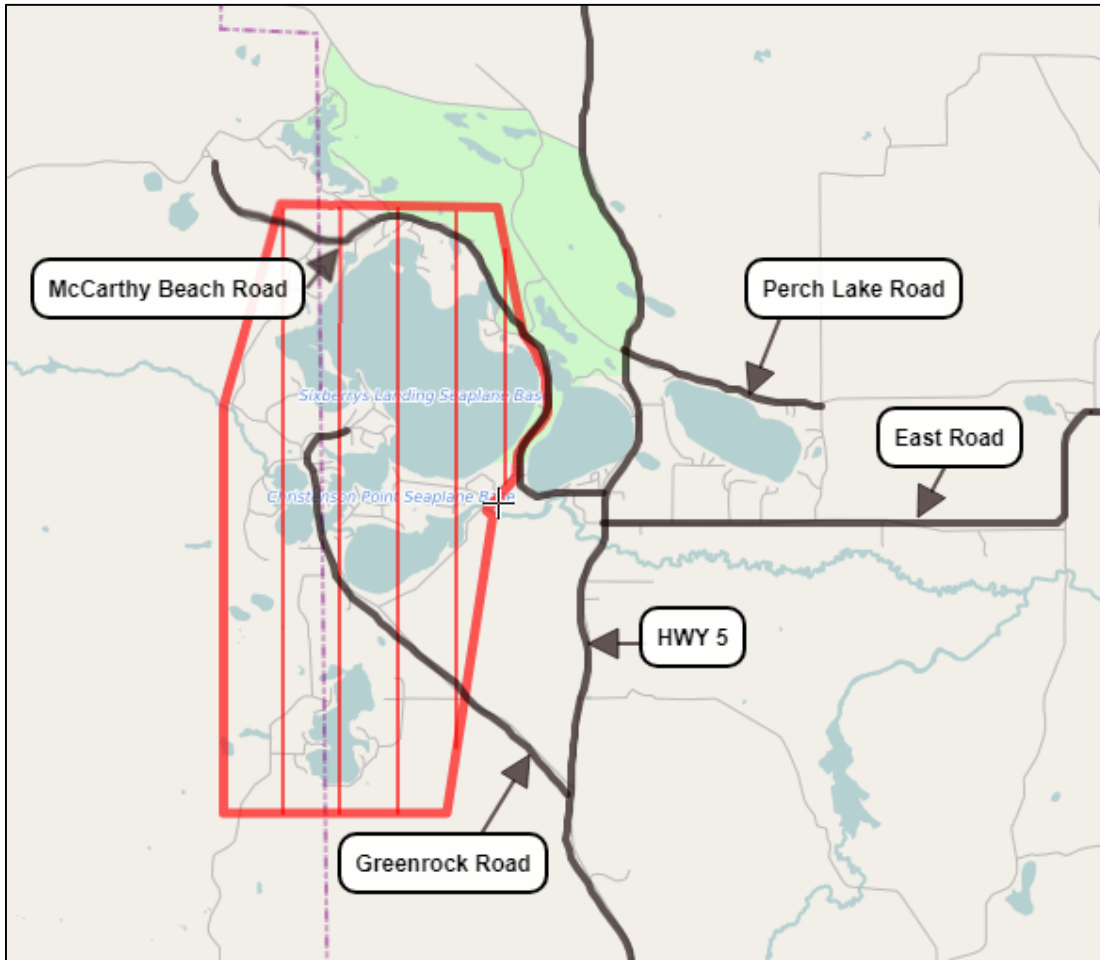


BROADBAND OPPORTUNITY IN SIDE LAKE



PAUL BUNYAN COMMUNICATIONS HAS OBTAINED A GRANT TO HELP BRING FIBER OPTIC BROADBAND SERVICE TO YOUR HOME IF YOU LIVE IN THE AREA DESIGNATED ON THE MAP

THOSE LIVING IN THIS AREA will be receiving information from Paul Bunyan Communications in the mail in the next several months. **THIS IS NOT JUNK MAIL!** You need to respond to Paul Bunyan in order to obtain broadband services from them. If you do not order service(s), fiber optic cable will not be installed to your home or business.

THOSE NOT LIVING IN THIS AREA could also be considered for fiber optic broadband service to your home, provided by Paul Bunyan Communications.

**Representative from Paul Bunyan Communications at
Town Board Meeting on March 5, 2019 at 7:00pm.**

WHAT SHOULD YOU DO?

- Research current and future broadband service opportunities and evaluate your current service
- Consider joining the “Paul Bunyan Communications Iron Range Fiber Optics Projects” facebook group at <https://www.facebook.com/groups/PBC.IronRange/> for the latest maps and information
- Talk to your neighbors about their broadband service and inform them of opportunities
- **RESPOND TO THE MAILING FROM PAUL BUNYAN COMMUNICATIONS WHEN RECEIVED**
- Attend the Town Board Meeting on March 5th, 2019 for more information

PAUL BUNYAN COMMUNICATIONS HAS OBTAINED A STATE OF MINNESOTA BORDER TO BORDER BROADBAND GRANT TO HELP BRING FIBER OPTIC BROADBAND SERVICE TO A PORTION OF THE SIDE LAKE COMMUNITY.

Paul Bunyan Communications plans to begin building fiber to the home in the Side Lake Community in August, 2019. This is a result of interest and questionnaires that was provided by community members in the past. They would like to explore opportunities for expanding their coverage in this area. After the initial build-out project it may be a while before fiber to your home will be available again.

There are several providers who offer broadband service in the Side Lake Community. This notice is not intended to promote one provider over another, but rather to inform you of options that are, or will soon be, available in the community.

Paul Bunyan Communications has one of the largest all-fiber optic rural Gigabit networks (GigaZone) in the United States capable of download and upload speeds of up to 1000 Mbps. They offer internet speeds ranging from 20Mbps to 1Gbps with no data usage limits to over 35,500 locations throughout its current service territory. Consider joining the “Paul Bunyan Communications Iron Range Fiber Optics Projects” facebook group at <https://www.facebook.com/groups/PBC.IronRange/> for the latest maps and information.

CenturyLink obtained a grant in the past for some of this area and they currently offer broadband delivered from a fiber optic line to a central hub near the Side Lake Recreation Site. Service from the hub to the home is delivered through copper telephone lines. Speeds in this area currently range from 12-20 Mbps. See expected speeds to your home centurylink.com. Their site states: “listed internet speeds vary due to conditions outside of network control, including customer location, equipment, and access through a wireless connection, and are not guaranteed”.

Northern Wireless Media is also available in the Side Lake Community. They are a new kind of high-speed wireless internet service provider that provides high speed internet connections to places in very remote areas. They provide a means of getting high speed internet that ranges up to 15 Mbps. Visit www.northernwirelessmedia.com

Understanding the difference between internet speed and data usage can be confusing.

Internet speed is the measure of how quickly information is transferred to your device. The numbers you can expect to see for your internet speed can range from 1 Mbps to 100 Mbps (Mbps = millions of bits per second or megabits per second). If you have a 50 Mbps connection, your data is transferring to your devices twice as fast as a 25 Mbps connection. Think of it as the difference between 50 miles per hour and 25 miles per hour.

Data usage is the measure of how much data you’re consuming. The numbers you can expect to see in data plans could be anything from 1 GBs to 250 GBs, and in some cases, you may have an unlimited data plan. (GBs = billions of bytes or Gigabytes). You’ll notice there’s not a “per second” in this one. That’s because it is a measure of how much and not a measure of how fast.

Faster internet speeds don’t necessarily mean you would use more data. It would just deliver it to you faster.